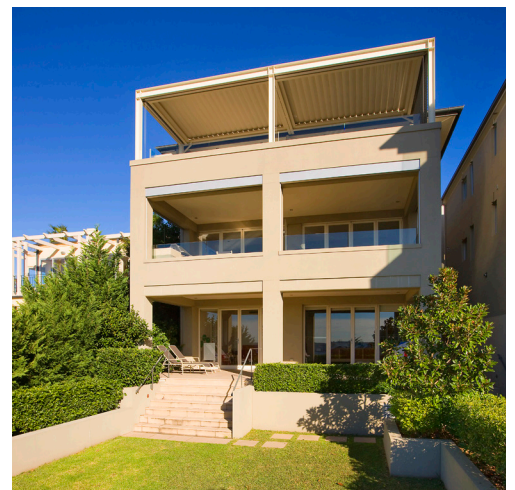


Located on the Balmoral slopes, with extensive views over Balmoral Beach and Sydney Harbour, this two-storey duplex apartment was redeveloped to create a pair of two-level luxury apartments with an internal lift. To maximise views, each apartment includes living, dining and kitchen areas running the full width of the site and onto large terraces. Finished to the highest standards, this development reached record sale price and was awarded the 2005 Master Builders Excellence in Building award in the Apartment category.



Photographer: Craig Bryant