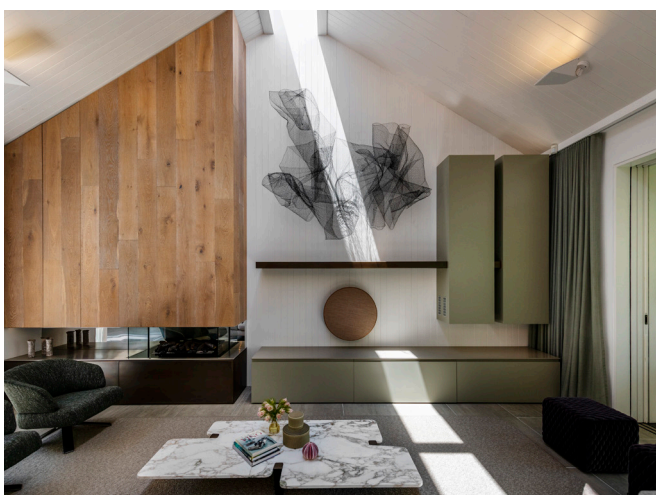


This project involved the refurbishment of a heritage listed federation house on the Balmoral slopes. The original main house underwent complete refurbishment. At the rear of the original house a major new pavilion was added. The feature of the pavilion are the high raked timber line ceilings with a large skylight running along the entire length of the room. A central courtyard separates the original house and new pavilion allowing winter sun to penetrate into the main living spaces. Another fine example of the careful blending of a traditional federation with modern interiors.



Photographer: Richard Glover